



Wooly

Wooly vävs av återvunnen ull. Det kan vara överblivet material från konfektionstillverkning eller andra ullprodukter som återvunnits. Varje producerat kilo av ren ny ull genererar 9 kg koldioxid. Att processa 1 kilo återvunnen ull genererar endast 0,5 kg koldioxid. Positiv miljöpåverkan tack vare mindre vattenförbrukning, energi och lägre CO2 påverkan. Wooly är certifierat enligt Global Recycled Standard (GRS).

Ullen färgas inte med vatten, utan med hjälp av att kombinera garn från återvunna kläder i olika färger får textilierna sina vackra nyanser.

Användningsområden:

Dekorationstextil, Möbiltyg offentlig miljö, Gardin och draperi, Möbiltyg, Textil, sängkappor & överkast



Wooly 2150 Soft sand
1039033



Wooly 9352 Flax
1039034



Wooly 2295 Rock
1039035



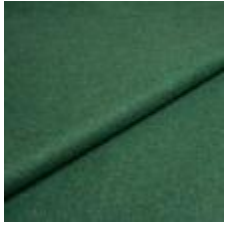
Wooly 9732 Light
camel
1039036



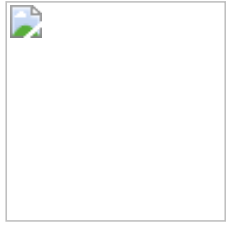
Wooly 1026B Dark
camel
1039037



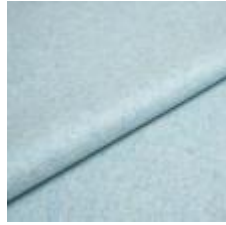
Wooly 2317 Solid
brown
1039038



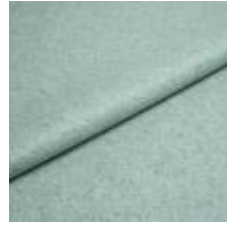
Wooly 2246 Spruce
1039039



Wooly 2323 Cold
green
1039061



Wooly 2308 Agate
1039062



Wooly 2314
Moonstone
1039063



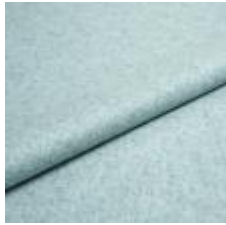
Wooly 2309 Rose
quartz
1039064



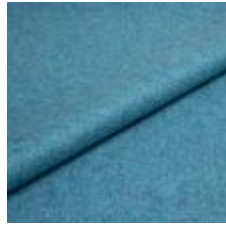
Wooly 103 Tourmaline
1039065



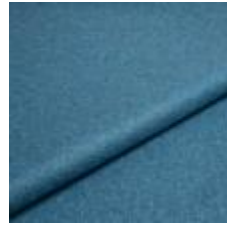
Wooly 9699 Kunzit
1039066



Wooly 2320 Aqua
1039067



Wooly 2296 Denim
1039068



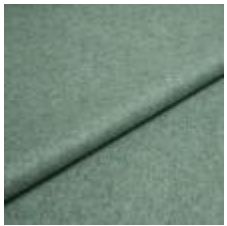
Wooly 2254 Indigo
1039069



Wooly 27 Mustard
1039070



Wooly 2316 Jasper
1039071



Wooly 81 Apatit
1039072



Wooly 1016 Bone
1038810



Wooly Plus 2256 Ivory
melange
1039005



Wooly 2151 Beige
1038826



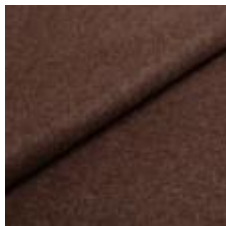
Wooly 1037 Sand
1038816



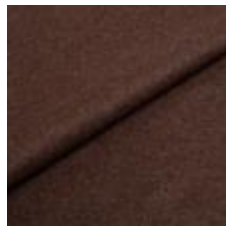
Wooly 1026 Light
brown
1038836



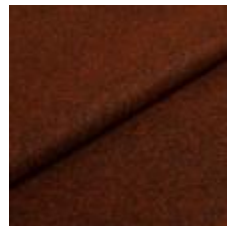
Wooly Plus 9202
Taupe
1039007



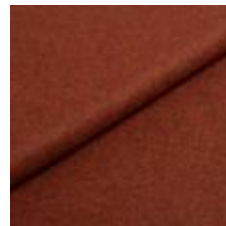
Wooly 1008 Brown
1038806



Wooly Plus 1008 B
Ebony
1039008



Wooly Plus 2153 Java
melange
1039014



Wooly Trend 380037
Rust
1039025



Wooly Plus 1040
Brick melange
1039013



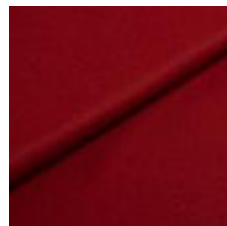
Wooly Plus 2278
Orange melange
1039011



Wooly 2012 B Terra
1038831



Wooly Plus 2016 B
Dark terracotta
1039012



Wooly Trend 2301
Marsala
1039026



Wooly Plus 9145
Pumpkin
1039010



Wooly Plus 2272
Dijon
1039009



Wooly Plus 2252 Soft green
1039002



Wooly Plus 9759 Leaf
1039003



Wooly Plus 2270 Lime
1039001



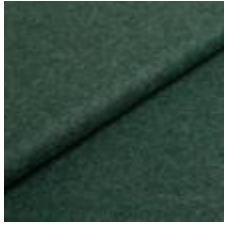
Wooly 2079 Green
1038813



Wooly Plus 2269 Emerald
1039004



Wooly Trend 2302 Court
1039027



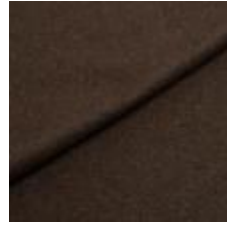
Wooly Trend 849139 Teal
1039029



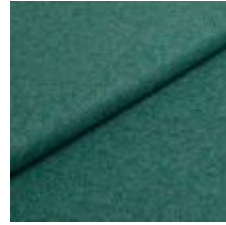
Wooly Trend 840069 Juniper
1039028



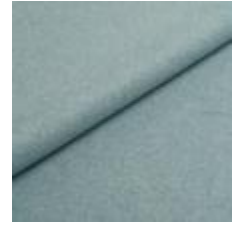
Wooly 1011 Bottle green
1038803



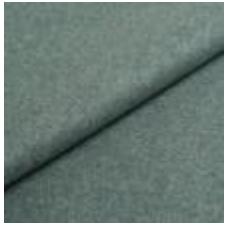
Wooly 1010 Forest
1038823



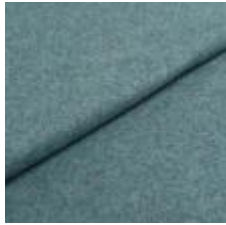
Wooly Trend 842287 Lagoon
1039032



Wooly Plus 9860 Soft blue
1039021



Wooly Trend 228881 Lapis
1039030



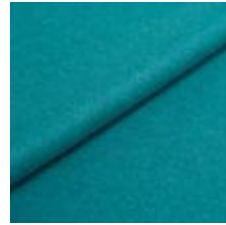
Wooly Plus 2288 Soda
1039024



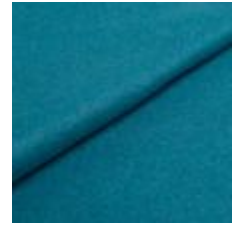
Wooly Trend 22882287 Aquamarin
1039031



Wooly Plus 0106 Turquoise
1039018



Wooly Plus 2287 Opal
1039019



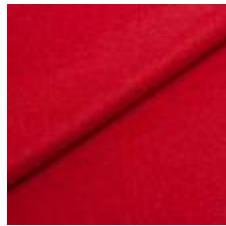
Wooly 2240 Petrol
1038822



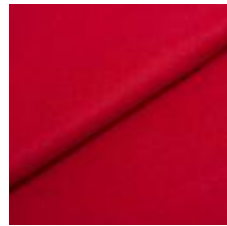
Wooly Plus 2279 Ocean
1039022



Wooly Plus 2011 B Red
1039015



Wooly 2011 Tulip
1038841



Wooly 2142 Raspberry
1038801



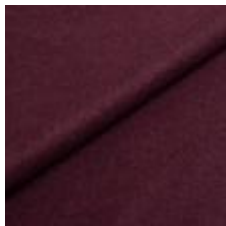
Wooly Plus 9872 Pink
1039016



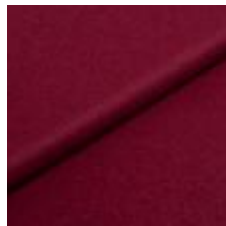
Wooly 1044 Cerise
1038811



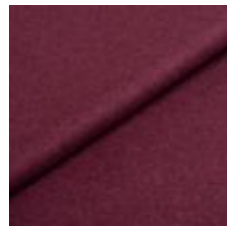
Wooly 2020 Lilac melange
1038881



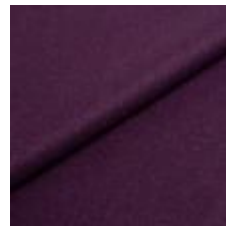
Wooly 2014 Plum
1038871



Wooly Plus 9233 Wine
1039023



Wooly 2238 Aubergine
1038861



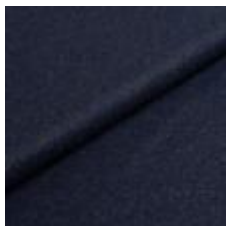
Wooly 2255 Dark lilac
1038891



Wooly Plus 0091 Berry
1039017



Wooly 2019 Marine
1038802



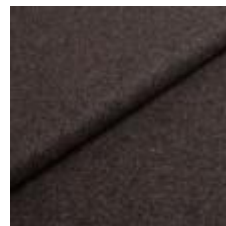
Wooly 1007 Navy
1038842



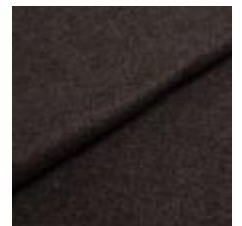
Wooly 1000 Light grey
1038817



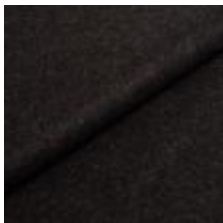
Wooly 1042 Graphite
1038807



Wooly 1001 Anthracite
1038847



Wooly 1002 Koks
1038804



Woolly 1003 Black
1038844

Bredd:	150 cm ±2 cm
Innehåll:	70% Återvunnen ull, 25% Polyamide, 5% Andra fibrer
Vikt (g/m ²):	400
Rullängd (m):	40
Typ:	Garnfärgat
Brandtest:	BS 5852-1 Source 0 & 1, Cal TB 117, EN 1021-1 & 2, EN 13773
Martindale:	150000 (ISO 12947-2)
Pilling:	4 (ISO 12945-2)
Färghårdighet mot gnidning - torr:	5 (ISO 105-X12)
Färghårdighet mot gnidning - våt:	4-5 (ISO 105-X12)
Ljusäkthet:	6 (ISO 105-B02)
Sömskridning Varp:	2,8 mm (ISO 13936-2)
Sömskridning Väft:	3,5 mm (ISO 13936-2)

Dragbrottsgräns Varp:	511 N
Dragbrottsgräns Väft:	301,4 N
Rivstyrka Varp:	43 N
Rivstyrka Väft:	28,9 N
Ljudabsorption:	Klass C, α_w 0,70 (ISO 354)
Dimensionsändring Varp:	- 1,14 %
Dimensionsändring Väft:	- 0,67 %
Färghårdighet mot vattenfläckning:	ISO 105-E16
Färgändring:	4-5
Färghårdighet mot svett:	ISO 105-E04
Anfärgning, multifiberväv:	4
Färgändring:	4-5
Färghårdighet mot vatten:	4-5 (ISO 105-E01)

Våra ulltyger Woolly, Woolly Wide, Margrethe och Lillehammer, är framtagna utan vattenförbrukande färgningsprocess. Färger väljs och olika nyanser blandas för att nå den slutliga färgen. Mindre färgavvikelser måste betraktas som en karaktär av dessa egenskaper.



-
-
-

Nödvändiga