

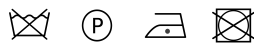
## Noblesse

Stiltyg med smal rand. Matchar med systerdesignen Mona.

Användningsområden:

Dekorationstextil, Möbeltyg offentlig miljö, Gardin och draperi, Möbeltyg

Bredd:	140 cm ±2 cm	Martindale:	40000
Innehåll:	39% VISCOS, 31% Bomull, 30% Polyester	Färghärdighet mot gnidning - torr:	5 (ISO 105-X12)
Vikt (g/m <sup>2</sup> ):	550	Färghärdighet mot gnidning - våt:	5 (ISO 105-X12)
Rapport (cm):	1,7	Ljusäkthet:	7 (ISO 105-B02)
Typ:	Garnfärgat	Sömnskridning Varp:	1,0 mm
Öko-Tex certifikat:	22000172	Sömnskridning Väft:	2,2 mm
Brandtest:	BS 5852-1 Source 0 & 1	Färghärdighet mot vatten:	5 (ISO 105-E01)

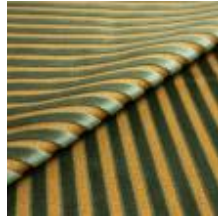




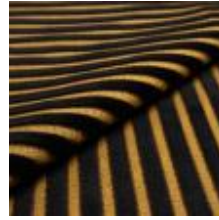
Noblesse 1 Röd  
1023701



Noblesse 2 Blå  
1023702



Noblesse 3 Grön  
1023703



Noblesse 4 Svart  
1023704



Noblesse 5 Guld  
1023705



Noblesse 10 Vit  
1023710



Noblesse 11 Rosa  
1023711



Noblesse 13 Ljusgrön  
1023713

## You control your data

We and our partners use technologies, including cookies, to collect information about you for various purposes, including:

- Necessary – makes the website usable.
- Statistics – help us understand how visitors interact with our website.
- Marketing – Used by advertisers to help us display relevant ads in other channels.

By clicking 'Accept All' you consent to all these purposes. You can also choose to indicate what purposes you will consent to using the custom selections and then click 'Accept selected'.

Decline All

Accept All

Necessary



Statistics



Marketing

